



[illegible]PRELIMINARY

[illegible]

R	1	2	3	4	5	6	7	8	9	10	11	12	13	14	15	16	17	18	19	20
Q																				
P																				
N																				
M																				
L																				
K																				
J																				
H																				
G																				
F																				
E																				
D																				
C																				
B																				
A																				
	1	2	3	4	5	6	7	8	9	10	11	12	13	14	15	16	17	18	19	20

GENERAL NOTES

1. IT IS THE INTENTION TO PERFORM ALL OF THE REQUIRED WORK WITH THE LEAST INCONVENIENCE AND THE MAXIMUM SAFETY TO THE CONTRACTOR AND THE TRAVELING PUBLIC. IN ADDITION TO THE REQUIREMENTS FOR MAINTAINING TRAFFIC AS INDICATED IN THE Ohio MANUAL OF UNIFORM TRAFFIC CONTROL DEVICES, THE CONTRACTOR SHALL MAINTAIN THE EXISTING TRAFFIC CONTROL DEVICES AND MATERIAL SPECIFICATIONS, LATEST EDITION. THE FOLLOWING REQUIREMENTS SHALL APPLY AT ALL TIMES FOR THE DURATION OF THE CONSTRUCTION PROJECT, EXCEPT WHEN OTHERWISE NOTED IN THE PLAN, OR DIRECTED BY THE ENGINEER.
2. ADAPT THE MAINTENANCE OF TRAFFIC PLANS, WHEN DIRECTED BY THE ENGINEER, TO MEET FIELD CONDITIONS TO PROVIDE SAFE AND EFFICIENT TRAFFIC MOVEMENT. CHANGES MAY BE REQUIRED WHEN THE CONTRACTOR'S FIELD OBSERVATIONS INDICATE THAT THE EXISTING TRAFFIC CONTROL DEVICES ARE UNDESIRABLE OR RESULT IN DUPLICATE OR UNDESIRED OVERLAPPING OF SIGNS AND DEVICES. MODIFICATION MAY INCLUDE: MOVING, SUPPLEMENTING, COVERING OR REMOVAL OF SIGNS AND DEVICES.
3. ALL CHANGES IN TRAFFIC CONTROL DEVICES AND SIGNING SHALL BE MADE AT NIGHT TO MINIMIZE CONFLICTS WITH AIRPORT PATRONS DURING PEAK DAYTIME ACTIVITIES.
4. CONSTRUCTION FOR THIS WORK MAY OVERLAP WITH CONSTRUCTION FOR TERMINAL CANOPY RENOVATION. THE CONTRACTOR SHALL BE RESPONSIBLE FOR COORDINATING WITH THE CONTRACTORS FOR THE TERMINAL CANOPY RENOVATION. THE CONTRACTOR SHALL MAINTAIN THE EXISTING TRAFFIC CONTROL DEVICES AND MATERIAL SPECIFICATIONS, LATEST EDITION, AND SHALL MAINTAIN THE EXISTING TRAFFIC CONTROL DEVICES AND MATERIAL SPECIFICATIONS, LATEST EDITION, IN A SAFE AND EFFICIENT MANNER AT ALL TIMES DURING CONSTRUCTION.

TIME RESTRICTIONS

5. DO NOT CLOSE OR NARROW TRAVEL LANES ON TERMINAL DRIVE, MONDAY THROUGH FRIDAY, 5 AM TO 10 AM AND 4 PM TO 9 PM.
6. DO NOT CLOSE OR NARROW TRAVEL LANES DURING HOLIDAYS AND SPECIAL EVENTS AS FOLLOWS:
 - A. FOR ANY EVENT THAT CREATES UNUSUALLY HIGH TRAFFIC VOLUMES, AS DIRECTED BY THE ENGINEER.
 - B. FOR NEW YEAR'S, BETWEEN THE HOURS OF 12:00 P.M. DECEMBER 31ST TO 12:00 A.M. JANUARY 2ND.
 - C. FOR LABOR DAY, BETWEEN THE HOURS OF 12:00 P.M. FRIDAY TO 12:00 A.M. TUESDAY.
 - D. FOR THANKSGIVING, BETWEEN THE HOURS OF 12:00 P.M. TUESDAY TO 12:00 A.M. MONDAY.
 - E. FOR CHRISTMAS, BETWEEN THE HOURS OF 12:00 P.M. THE FRIDAY BEFORE THE WEEK OF CHRISTMAS DAY AND 12:00 A.M. THE FOLLOWING MONDAY AFTER THE WEEK OF CHRISTMAS.
7. DO NOT IMPLEMENT TRAFFIC PATTERN SWITCHES ON TERMINAL DRIVE, ANY DAY BETWEEN 5:00 AM AND 9:00 PM.
8. DO NOT STOP TRAFFIC FOR MORE THAN 10 MINUTES ON TERMINAL DRIVE FOR TRAFFIC PATTERN SWITCHES.

LANE AND SHOULDER CLOSURE REQUIREMENTS

9. REMOVE LANE CLOSURE DEVICES FROM THE LANE WHEN WORK IS NOT BEING PERFORMED BEHIND THE LANE CLOSURE OR WHEN A LANE CLOSURE IS NO LONGER NEEDED, OR AS DIRECTED BY THE ENGINEER.
10. WHEN PERSONNEL AND/OR EQUIPMENT ARE EXCAVATING WITHIN 4 FT. OF AN OPEN TRAVEL LANE, CLOSE THE NEAREST OPEN TRAVEL LANE USING THE STANDARD DETAILS PROVIDE IN THE PLANS UNLESS THE WORK AREA IS PROTECTED BY BARRIER OR CURB/RAIL.
11. WHEN PERSONNEL AND/OR EQUIPMENT ARE WORKING WITHIN A LANE OF TRAVEL, CLOSE THE LANE ACCORDING TO THE MAINTENANCE OF TRAFFIC PATTERN SWITCHES DIRECTED BY THE ENGINEER. CONDUCT THE WORK SO THAT ALL PERSONNEL AND/OR EQUIPMENT REMAIN WITHIN THE CLOSED TRAVEL LANE.
12. A MINIMUM OF TWO (2) THROUGH LANES FOR PATRONS SHALL BE MAINTAINED AT ALL TIMES (TYP.).

PAVEMENT EDGE DROP OFF REQUIREMENTS

13. BACKFILL AT A 5:1 SLOPE UP TO THE EDGE AND ELEVATION OF EXISTING PAVEMENT IN AREA ADJACENT TO AN OPENED TRAVEL LANE WITH SUITABLE COMPACTED MATERIAL, AS APPROVED BY THE ENGINEER, AT NO EXPENSE TO THE CITY (AIRPORT).

TRAFFIC PATTERN ALTERATIONS

14. NOTIFY THE ENGINEER 10 CALENDAR DAYS PRIOR TO ANY TRAFFIC PATTERN ALTERATION.

SIGNING

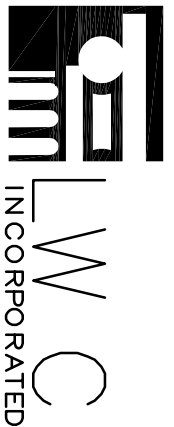
15. ALL TRAFFIC CONTROL SIGNS, EXCEPT LIMITED USE CORRELATED PLASTIC SIGNS USED IN ACCORDANCE WITH THE PROJECT SPECIAL PROVISIONS, SHALL BE REFLECTORIZED WITH ODOT TYPE G OR TYPE H SHEETING. ALL TRAFFIC CONTROL DEVICES SHALL BE NEW OR IN LIKE-NEW CONDITION (I.E., SIGNS NOT BENT, NO INCOMPLETE LETTERS OR BORDERS, NO DIRT OR LEGIBILITY DEFICIENCY) AT THE START OF CONSTRUCTION.
16. ALL POST MOUNTED SIGNS SHALL BE MOUNTED ON THREE (3) POUND PER FOOT SIGN SUPPORT CHANNEL. POSTS DRIVEN AT MINIMUM OF 42 INCHES INTO THE GROUND. THE CONTRACTOR SHALL BE RESPONSIBLE FOR ANY DAMAGE TO EXISTING UNDERGROUND UTILITIES ASSOCIATED WITH SIGN INSTALLATION OR REMOVAL.
17. ALL POST MOUNTED SIGNS OR SIGNS MOUNTED ON EXISTING UTILITY POLES SHALL BE MOUNTED A MINIMUM OF SEVEN (7) FEET BETWEEN THE BOTTOM OF THE SIGN AND THE EXISTING UTILITY POLES. SIGN SUPPORT CHANNELS SHALL BE MOUNTED AT A MINIMUM HEIGHT OF 5 FEET TO THE BOTTOM OF THE SIGN.
18. SIGNS MOUNTED ON TYPE III BARRICADES SHALL BE ERECTED IN ACCORDANCE WITH PAVEMENT MARKINGS OF THE ODOT. ALL SIGNS SHALL BE MOUNTED AND MAINTAINED IN A PLUMB POSITION.
19. INSTALL ADVANCE WORK ZONE WARNING SIGNS NO LONGER THAN THREE (3) DAYS PRIOR TO THE BEGINNING OF CONSTRUCTION. ADVANCE WORK ZONE WARNING SIGNS SHALL BE LONGER THAN ONE WEEK, REMOVE OR COVER ALL ADVANCE WORK ZONE WARNING SIGNS, AS DIRECTED BY THE ENGINEER, AT NO COST TO THE CITY.
20. ENSURE ALL NECESSARY SIGNING IS IN PLACE PRIOR TO ALTERING ANY TRAFFIC PATTERN.
21. THE BACKGROUND COLOR OF ALL PEDESTRIAN CROSSING WARNING SIGNS (W1-2) AND OF ALL ADVANCE WORK ZONE WARNING SIGNS SHALL BE WHITE. SIGNS SHALL BE MOUNTED ON DIAGONAL DOWNWARD POINTING YELLOW BACKGROUNDS. SIGNS SHALL BE GREEN. USE OF STANDARD YELLOW BACKGROUNDS FOR SLOTT SIGNS IS NOT PERMITTED.

TRAFFIC BARRIER

22. INSTALL PORTABLE CONCRETE BARRIER, WATER-FILLED BARRIER, AND PORTABLE LANE SEPARATOR WITH THE TRAFFIC FLOW, BEGINNING WITH THE UPSTREAM SIDE OF TRAFFIC. REMOVE PORTABLE CONCRETE BARRIER, WATER-FILLED BARRIER, AND PORTABLE LANE SEPARATOR AGAINST THE TRAFFIC FLOW, BEGINNING WITH THE DOWNSTREAM SIDE OF TRAFFIC.
23. INSTALL AND SPACE DRUMS ON 20 FT CENTERS TO CLOSE OR KEEP CLOSED THE SECTION OF THE ROADWAY UNTIL THE BARRIER CAN BE PLACED OR AFTER BARRIER IS REMOVED.
24. PORTABLE CONCRETE BARRIER AND WATER-FILLED BARRIER SHALL BE PROPERLY DELINEATED WITH FACE MOUNTED WHITE REFLECTORS (29 FT. SPACING).


TRAFFIC CONTROL DEVICES

25. UNLESS OTHERWISE SHOWN IN THE PLANS, SPACE DRUMS IN WORK AREAS NO GREATER THAN 20 FT. APART, EXCEPT 10 FT ON-CENTER IN RADI, AND 3 FT OFF THE EDGE OF AN OPEN TRAVELWAY, WHEN LANE CLOSURES ARE NOT IN EFFECT.
 26. USE CONES SPACED NO GREATER THAN 5 FT. APART WITHIN PARKING LOTS UNLESS OTHERWISE SHOWN IN THE PLANS.
 27. PLACE TYPE III BARRICADES WITH "ROAD CLOSED" SIGN R11-2 ATTACHED, OF SUFFICIENT LENGTH TO CLOSE ENTIRE ROADWAY. STAGGER OR OVERLAP BARRICADES TO ALLOW FOR INGRESS OR EGRESS OF AIRPORT AND EMERGENCY VEHICLES.
- PAVEMENT MARKINGS**
28. ALL TEMPORARY PAVEMENT MARKINGS SHALL MEET ODOT SPECIFICATION 740.02, TYPE 3 (PAINT) AND 740.06, TYPE 1 (REMOVABLE TYPE). TEMPORARY PAINT SHALL NOT BE USED ON ANY CONCRETE PAVEMENT OR ANY PAVEMENT SURFACE UNLESS THE PLANS SPECIFY OTHERWISE. NEW PAVEMENT TAPE SHALL BE USED FOR EACH PHASE OF MAINTENANCE OF TRAFFIC. IN NO CASE SHALL PAVEMENT TAPE BE REUSED.
 29. THE CONTRACTOR SHALL REMOVE ALL CONFLICTING PAVEMENT MARKINGS WITHIN THE CONSTRUCTION AREA. THIS SHALL INCLUDE ANY MARKINGS WITHIN 5 FEET OF A TEMPORARY DRIVING LANE. THE CONTRACTOR SHALL ALSO REMOVE THE TEMPORARY PAVEMENT MARKINGS WHEN THE WORK IS COMPLETED.
 30. INSTALL PAINT PAVEMENT MARKINGS THAT COMPLY WITH ODOT SPECIFICATION 740.02, TYPE 1 (FAST DRY, WATER-BASED), FOR PERMANENT MARKINGS ON THE FINAL SURFACE ON TERMINAL DRIVE.
 31. PARKING LOT STILL MARKINGS SHALL COMPLY WITH ODOT SPECIFICATION 740.02, TYPE 3 (CONVENTIONAL, WATER-BASED), EXCLUDING GLASS BEAD. PAINTED ISLANDS AS WELL AS PAVEMENT SYMBOLS AND WORDS SHOULD BE MAINTAINED UNTIL THEY SHALL COMPLY WITH ODOT SPECIFICATION 740.02, TYPE 3, AND SHALL INCLUDE GLASS BEAD. THE CONTRACTOR MAY USE TYPE 1 IN LIEU OF TYPE 3 IN PARKING LOTS.
 32. THE PROPOSED PAVEMENT MARKING LINES TO EXISTING PAVEMENT MARKING LINES.



PA
PASSERO ASSOCIATES
Engineering
www.passero.com

Dayton, Ohio
Cincinnati, Ohio
Akron, Ohio
St. Augustine, Florida



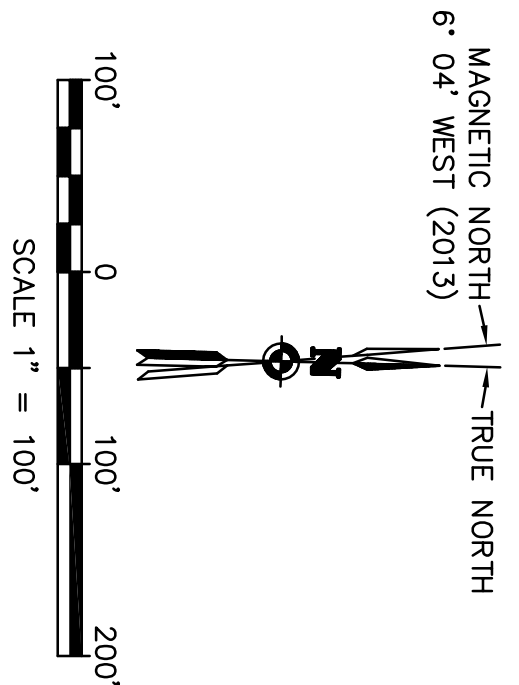
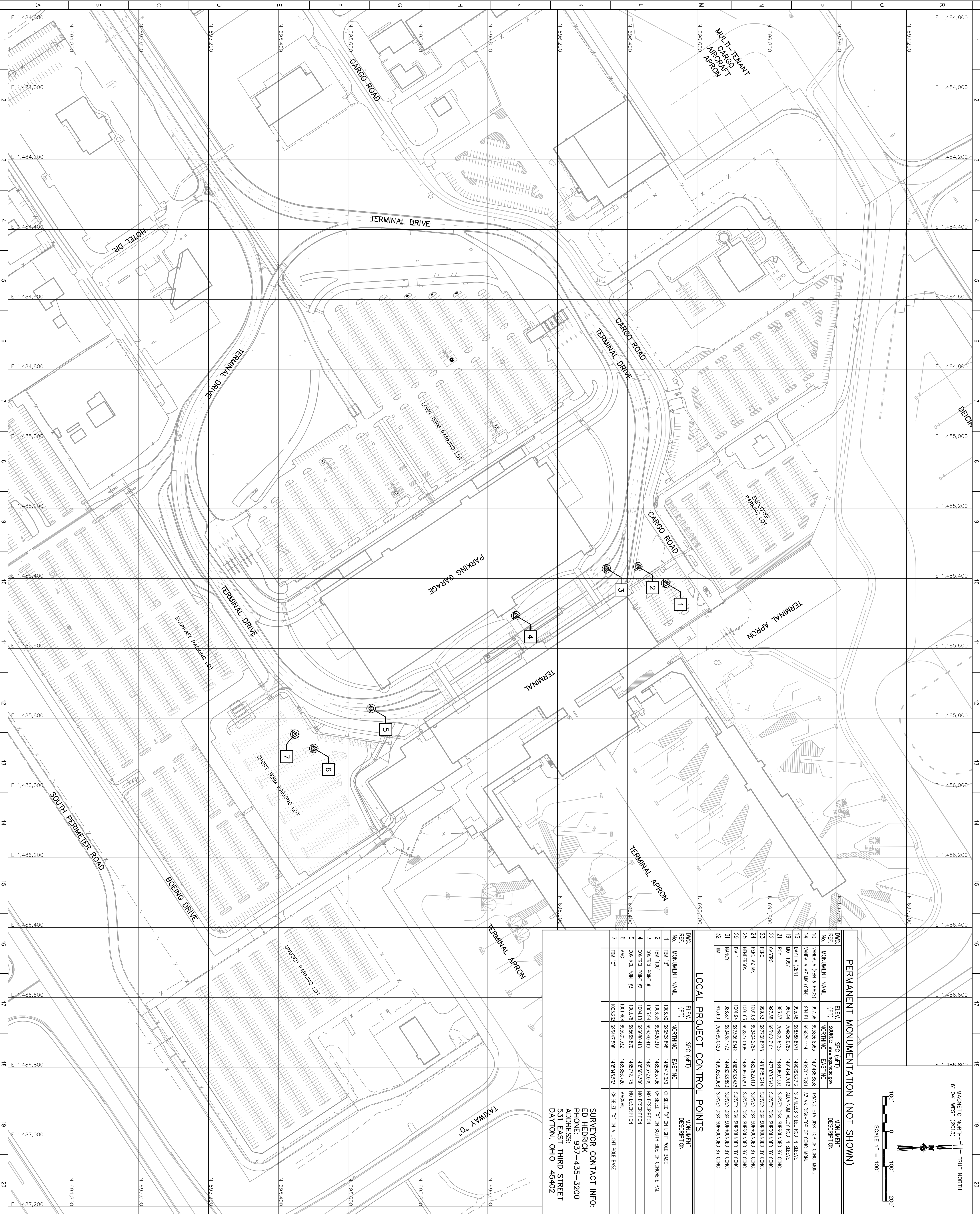
DAYTON INTERNATIONAL AIRPORT
3600 TERMINAL DRIVE #300
VANDALIA, OH 45377
(937) 454-8200

CANOPY RENOVATION
3600 TERMINAL DRIVE #300
VANDALIA, OH 45377

MAINTENANCE OF TRAFFIC NOTES
AND DETAILS

Contract No.	Date
13602.00	2014.3.31
Drawn	Design No.
ENAB	
Checked	
JWB	C104

© 2014 IAC, INCORPORATED



PERMANENT MONUMENTATION (NOT SHOWN)

DMG REF. NO.	MONUMENT NAME	ELEV. (FT)	SOURCE	SPC (SFT)	MONUMENT DESCRIPTION
10	VANDALIA (TRN & PWS)	997.56	69555.6553	148148.8858	TRANS. STA. DISK-TOP OF CONC. MANU.
14	VANDALIA AZ MK (CEN)	984.81	69679.1114	148274.7281	AZ MK DISK-TOP OF CONC. MANU.
15	DAY 1 A (CEN)	995.46	69898.8571	148293.2712	STAINLESS STEEL ROD IN SLICE
19	MOT 1097	964.44	70406.0785	148143.7012	ALUMINUM ALLOY ROD IN SLICE
21	ROY	963.37	70409.6426	148480.1333	SURVEY DISK SURROUNDED BY CONC.
22	CASTRO	997.39	695182.7164	147703.7642	SURVEY DISK SURROUNDED BY CONC.
23	PERO	999.33	692738.8278	148182.3214	SURVEY DISK SURROUNDED BY CONC.
24	PERO AZ MK	1001.08	692404.2784	148272.0119	SURVEY DISK SURROUNDED BY CONC.
25	HEGERSON	1001.63	692877.0188	148938.0291	SURVEY DISK SURROUNDED BY CONC.
29	DAY 1	1001.94	691536.0542	148692.3342	SURVEY DISK SURROUNDED BY CONC.
31	NANCY	996.87	693718.1773	148482.3853	SURVEY DISK SURROUNDED BY CONC.
32	TW	915.60	704785.0420	148506.2908	SURVEY DISK SURROUNDED BY CONC.

LOCAL PROJECT CONTROL POINTS

DMG REF. NO.	MONUMENT NAME	ELEV. (FT)	SFC (SFT)	MONUMENT DESCRIPTION
1	TBM "2"	1006.30	69650.898	CHISELED "X" ON LIGHT POLE BASE
2	TBM "100"	1006.35	69640.319	CHISELED "X" ON SOUTH SFC OF CONCRETE PAD
3	CONTROL POINT #1	1003.94	69640.419	NO DESCRIPTION
4	CONTROL POINT #2	1004.10	69680.418	148506.300 NO DESCRIPTION
5	CONTROL POINT #3	1003.76	69585.870	148572.1715 NO DESCRIPTION
6	MAG	1001.464	69550.932	148586.720 MAGNOL
7	TBM "C"	1003.23	69544.208	148585.533 CHISELED "X" ON A LIGHT POLE BASE

SURVEYOR CONTACT INFO:
ED HEDRICK
PHONE: 937-435-3200
ADDRESS:
531 EAST THIRD STREET
DAYTON, OHIO 45402

FIM
INCORPORATED
434 East First Street
4440 Grand Place
Dayton, OH 45402
Riverside, IN 47374
937.233.8500
765.866.3546

PASSERO ASSOCIATES
Engineering
www.passero.com
Dayton, Ohio
Rochester, New York
Albany, New York
St. Augustine, Florida
DAYTON INTERNATIONAL AIRPORT
3600 TERMINAL DRIVE #300
VANDALIA, OH 45377
(937) 454-8200

HORIZONTAL AND VERTICAL
CONTROL PLAN

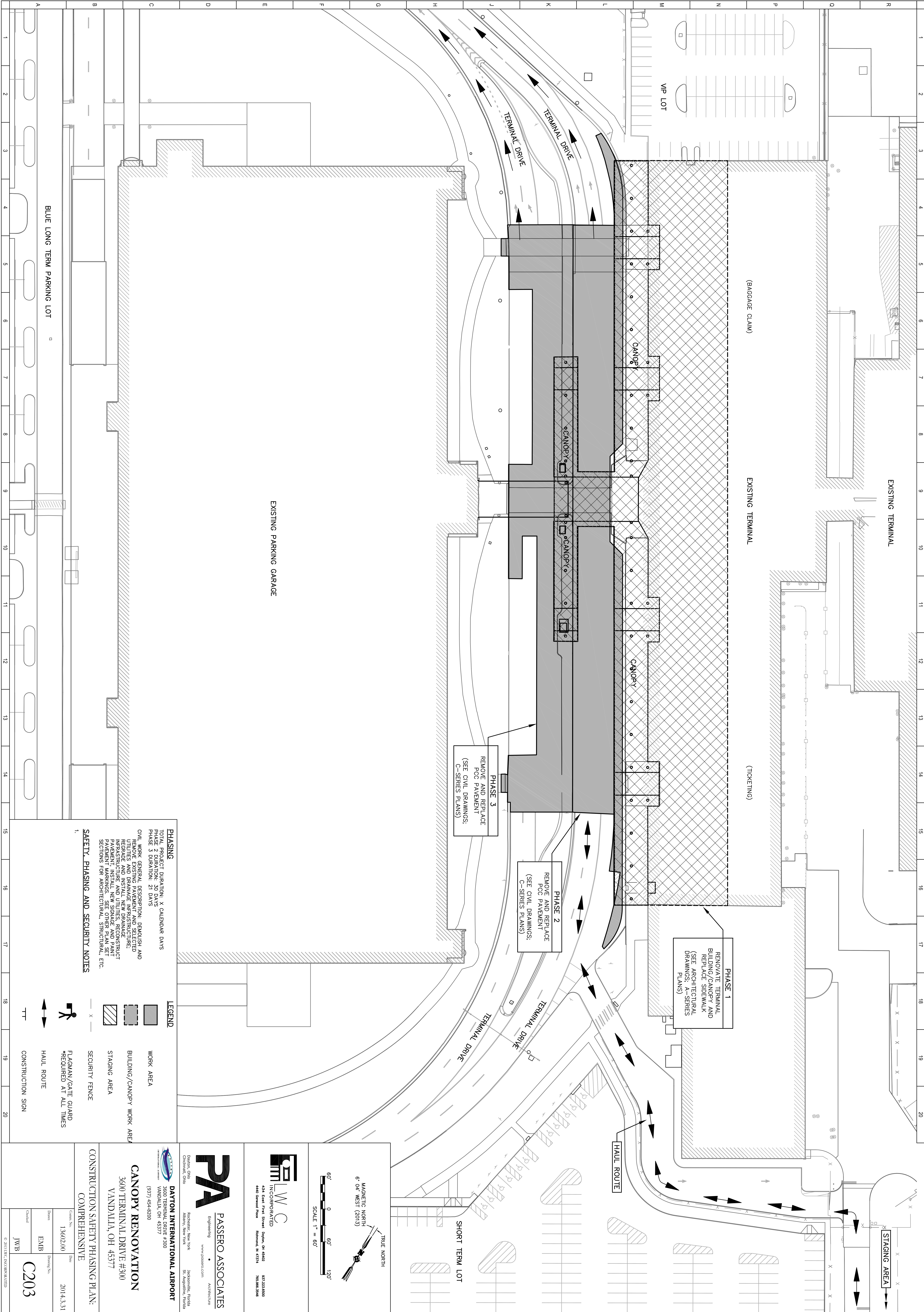
Grids N/A	Date
13602.00	2014.3.31

Drawn	ENAB	Design N/A
Checked	JWB	

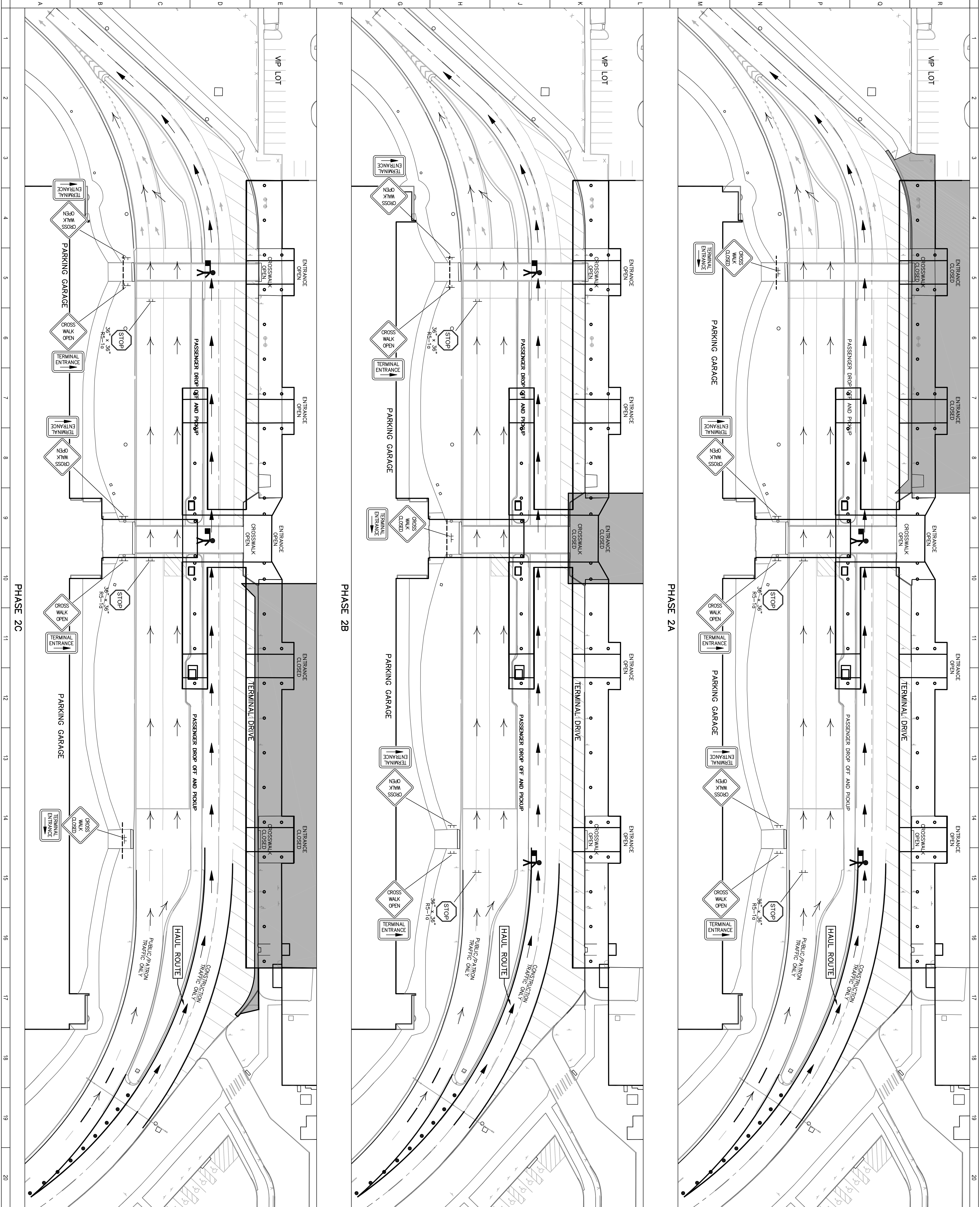
C105

© 2014 IAC, INCORPORATED

CANOPY RENOVATION
3600 TERMINAL DRIVE #300
VANDALIA, OH 45377







LEGEND

PROJECT LOCATION

STAGING AREAWORK LIMITS

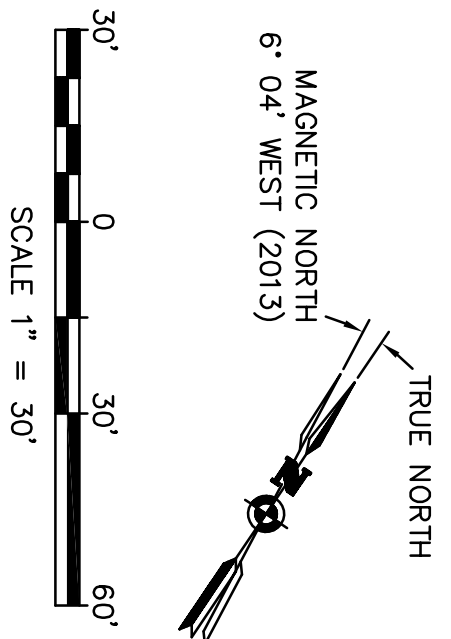
PHASING

TOTAL PROJECT DURATION: X CALENDAR DAYS

GENERAL WORK DESCRIPTION: BUILDING, CANOPY AND SIDEWALK RECONSTRUCTION; REMOVE AND RETENAGE EXISTING UTILITIES; INSTALL NEW SIGNAGE... ETC.

SAFETY, PHASING AND SECURITY NOTES

1.



LMWC
INCORPORATED

434 East First Street Dayton, OH 45402 937.233.8600

4440 Grandview Place Cincinnati, OH 45224 763.686.3246

PASSERO ASSOCIATES

Engineering www.passero.com architecture

Dayton, Ohio Rochester, New York Jacksonville, Florida

Cincinnati, Ohio Albany, New York St. Augustine, Florida

DAYTON INTERNATIONAL AIRPORT

3600 Terminal Drive #300 Vandalia, OH 45377

(937) 454-8200

CANOPY RENOVATION

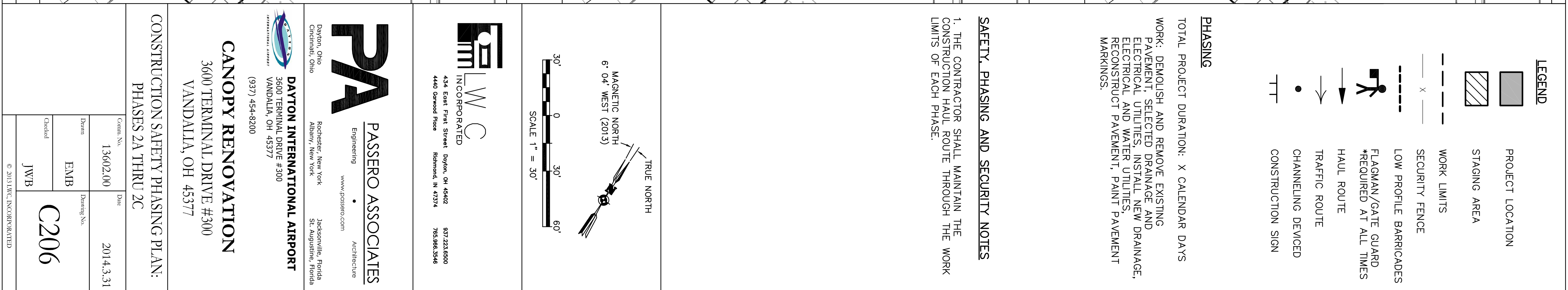
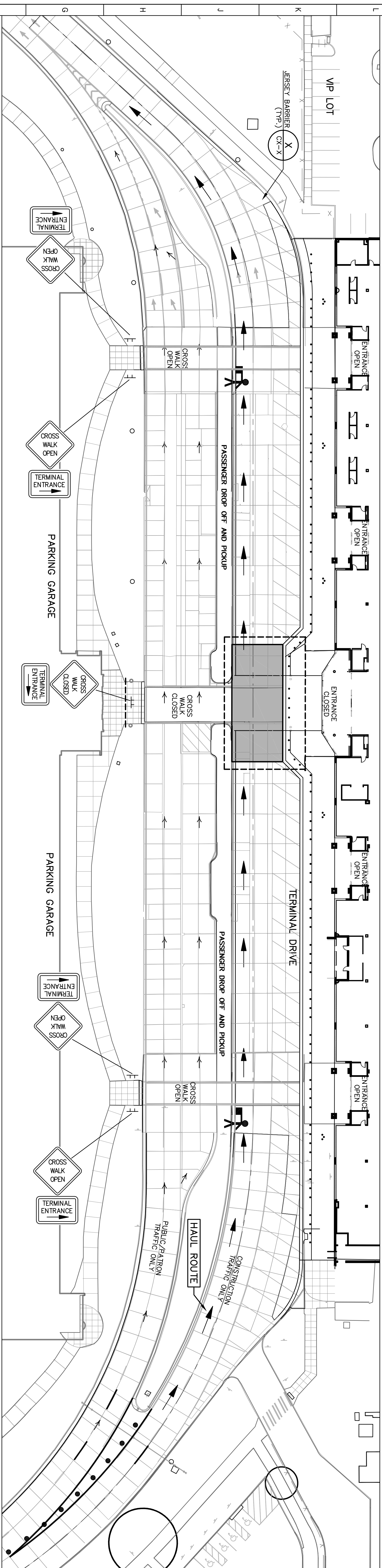
3600 TERMINAL DRIVE #300

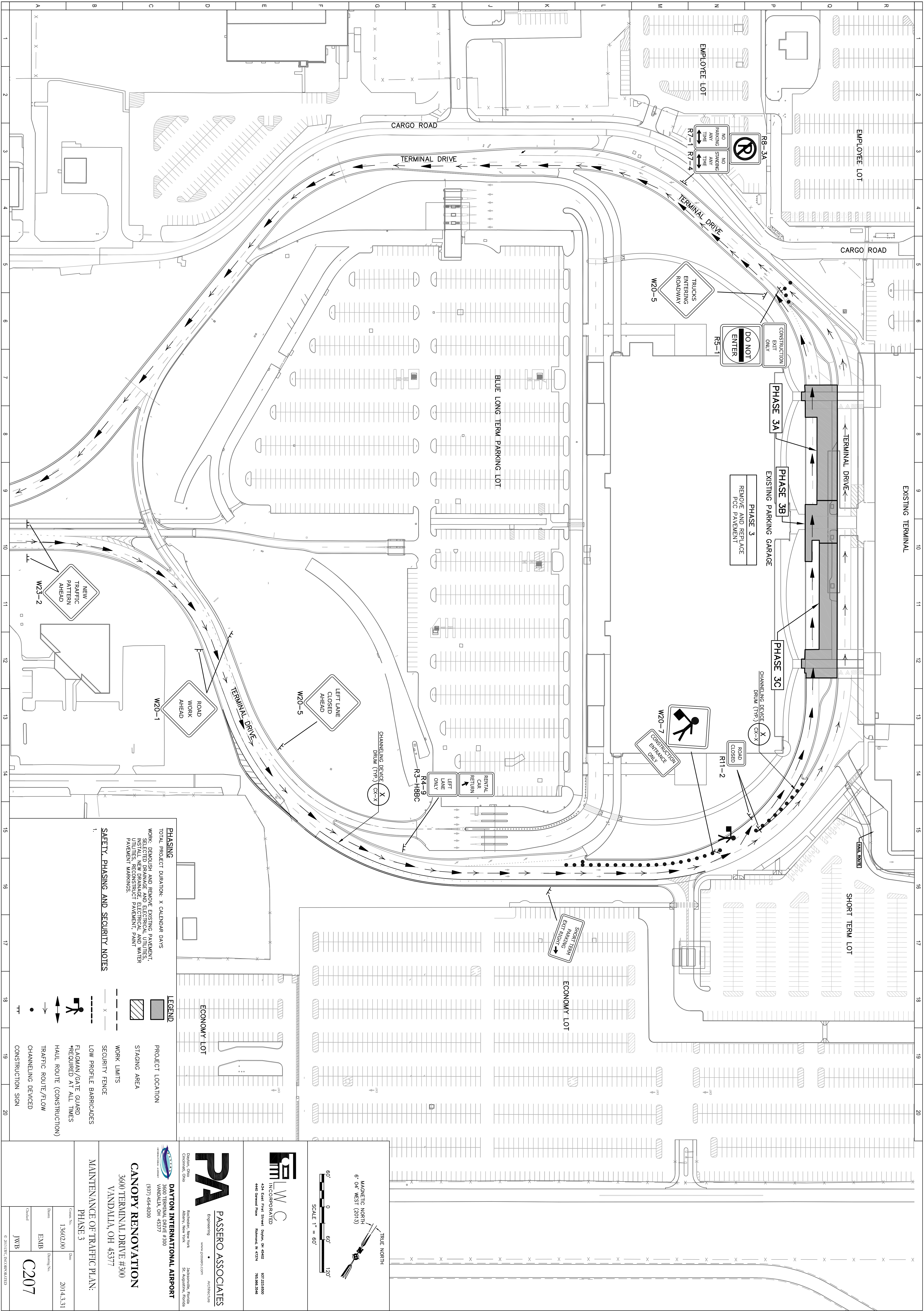
VANDALIA, OH 45377

CONSTRUCTION SAFETY PHASING PLAN:

PHASES 1A THRU 1C

Contract No.	13602.00	Date	2014.3.31
Drawn	ENAB	Design No.	
Checked	JWB		
C205			





PRELIMINARY